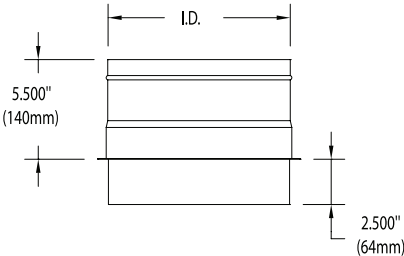


# TECHNICAL DATA SHEET

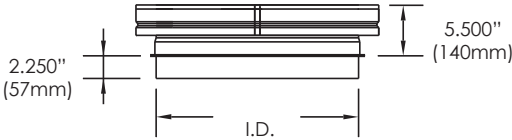
## CLOSURE SECTION • CS

Installed at the top of the chimney. It protects the chimney against water infiltration in the insulation between the inner and outer wall of the chimney. Installation of a drain-tee cap (DC) or a drain section (DS) at the base of the chimney is required for use of a closure section.

### SINGLE WALL



### DOUBLE WALL - 2" AND 4"



### AVAILABLE FOR MODELS:

IPP/IPPL/IPPL2/IPPL2F/IPPL4F

HEP/HEPL/HEPL2

GDP/GDPL/GDPL2F/GDPL4F